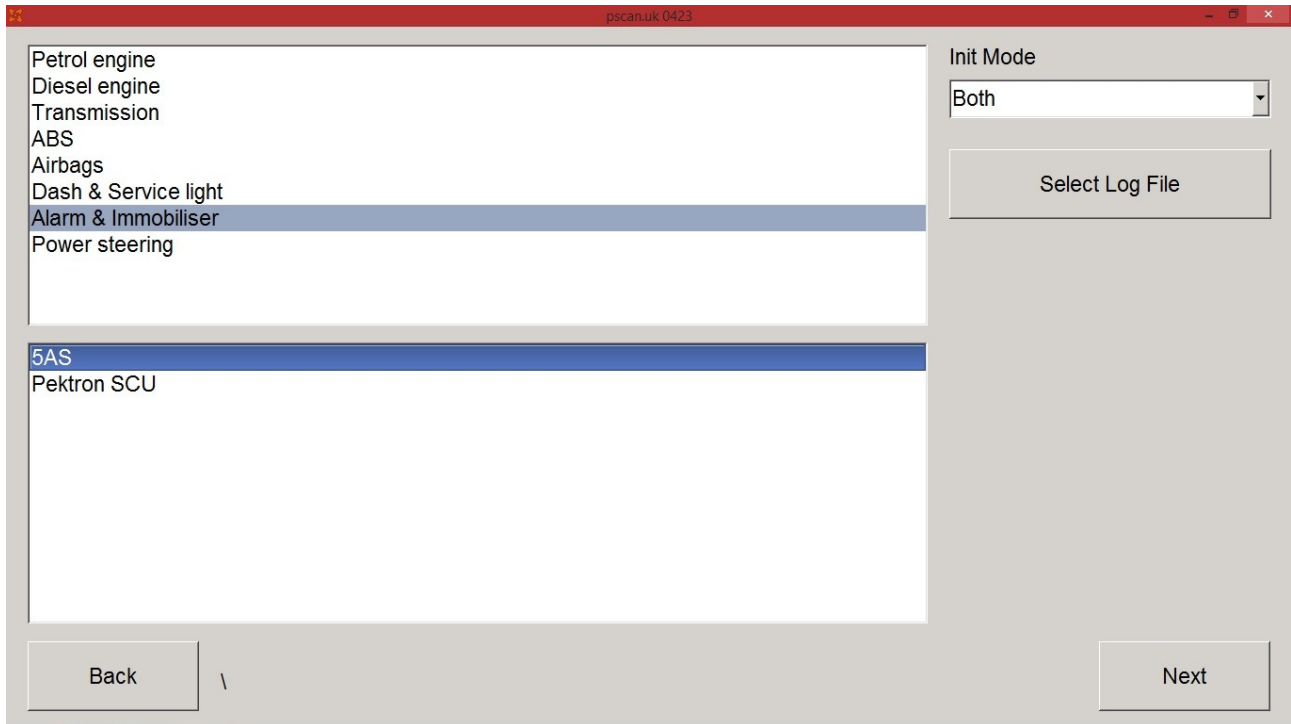


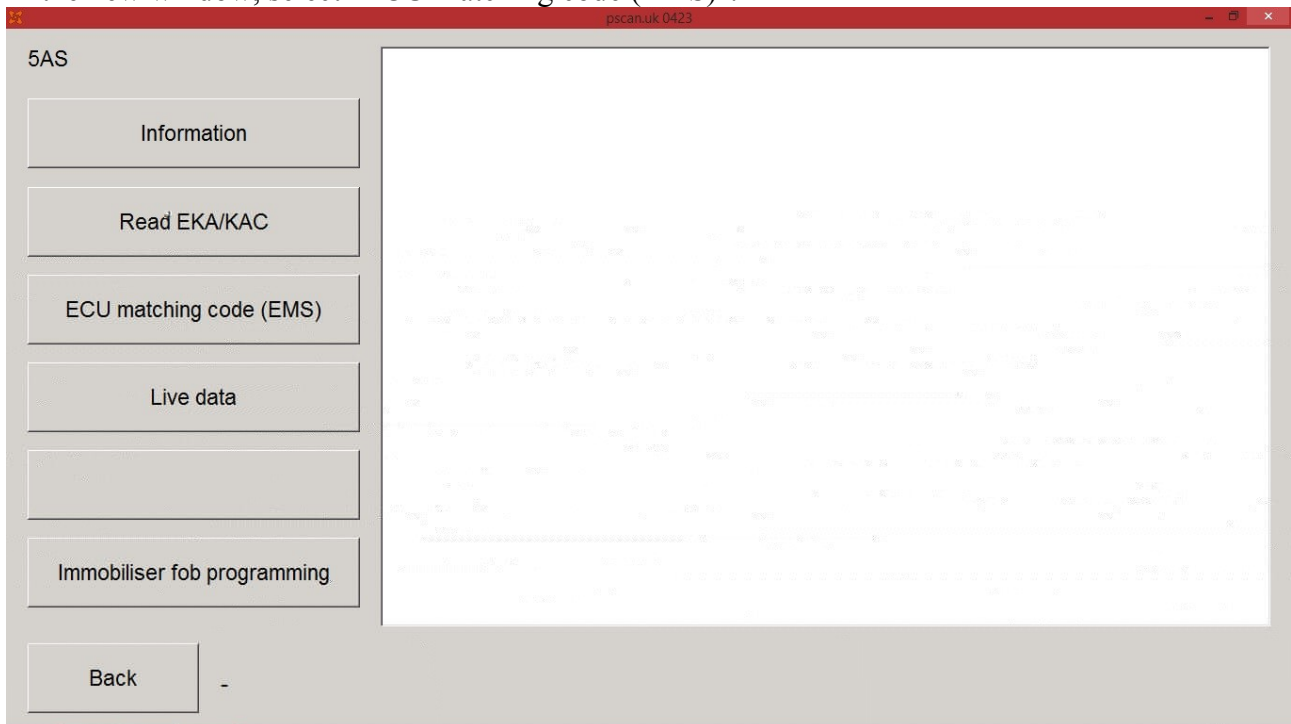
# *Synchronise*

## *ECU Engine / LUCAS 5AS*

After replacing ECU engine and / or alarm box Lucas 5as, connect the PSCAN and open it. Select "ALARM & IMMOBILIZER" then "5AS".



In the new window, select "ECU matching code (EMS)".



Read EMS code "Read EMS". It is possible to modify this code with the case "Increase digit 1" and "Next digit". Validate on "Write EMS" then return to the main page.

Select the type of motorisation (ex: Petrol engine) as well as the calculator model (ex: MEMS 2J).

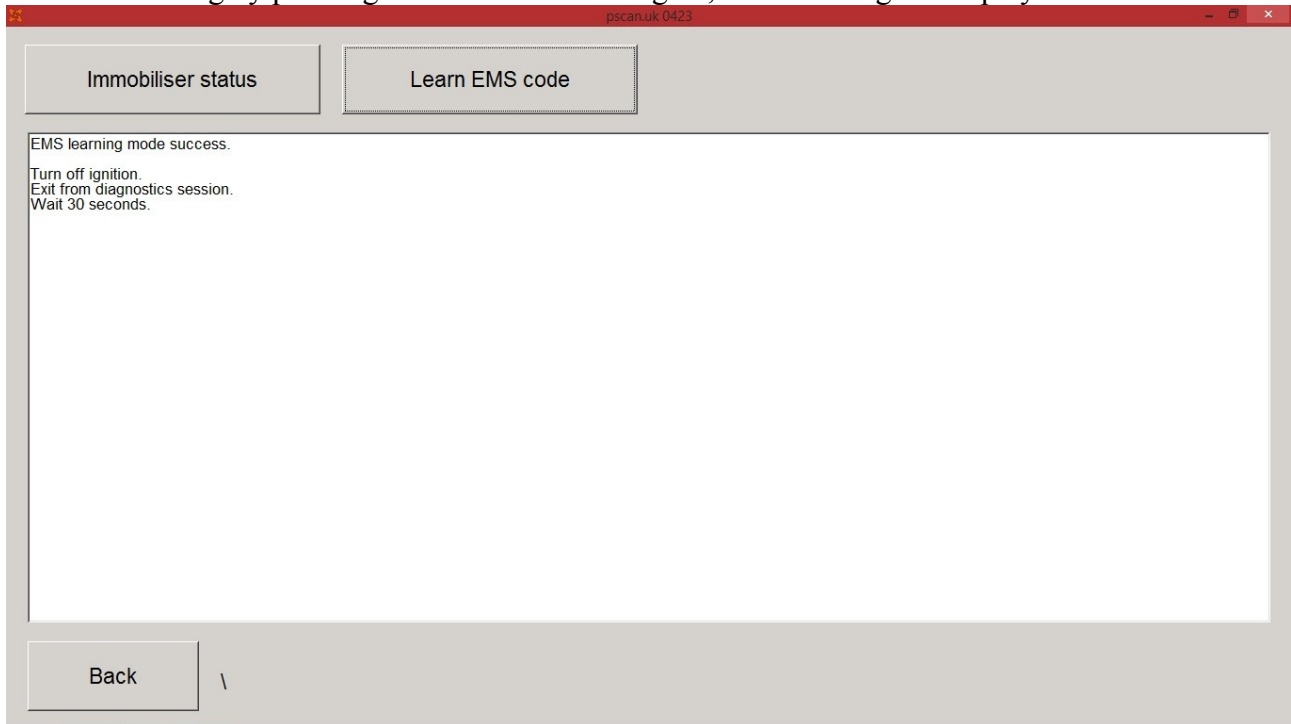
The screenshot shows the 'pscan.uk 0423' application window. On the left, there are two scrollable lists. The first list contains vehicle components: 'Petrol engine' (highlighted), 'Diesel engine', 'Transmission', 'ABS', 'Airbags', 'Dash & Service light', 'Alarm & Immobiliser', and 'Power steering'. The second list contains calculator models: 'OBD2 / EOBD ISO' (highlighted), 'OBD2 / EOBD PWM (V8 260)', 'MEMS 1.3', 'MEMS 1.6', 'MEMS 1.9', 'MEMS 2J', 'MEMS 3', 'EMS2000', and 'GEMS'. On the right, there is an 'Init Mode' dropdown menu set to 'Both' and a 'Select Log File' button. At the bottom, there are 'Back' and 'Next' buttons.

In this new window, select "Immobiliser".

The screenshot shows the 'pscan.uk 0423' application window with 'MEMS 2J' selected at the top left. On the left side, there is a vertical stack of buttons: 'Information', 'Read error codes', 'Erase error codes', 'Live Data', an empty button, and 'Immobiliser' (which is the selected option). At the bottom left, there is a 'Back' button. The main area on the right is a large, empty white rectangle.



After confirming by pressing "Learn EMS code" again, a last message is displayed.



The synchronization of the EMS code between the engine control unit and the Lucas 5AS alarm unit has been completed. The vehicle must be able to start.